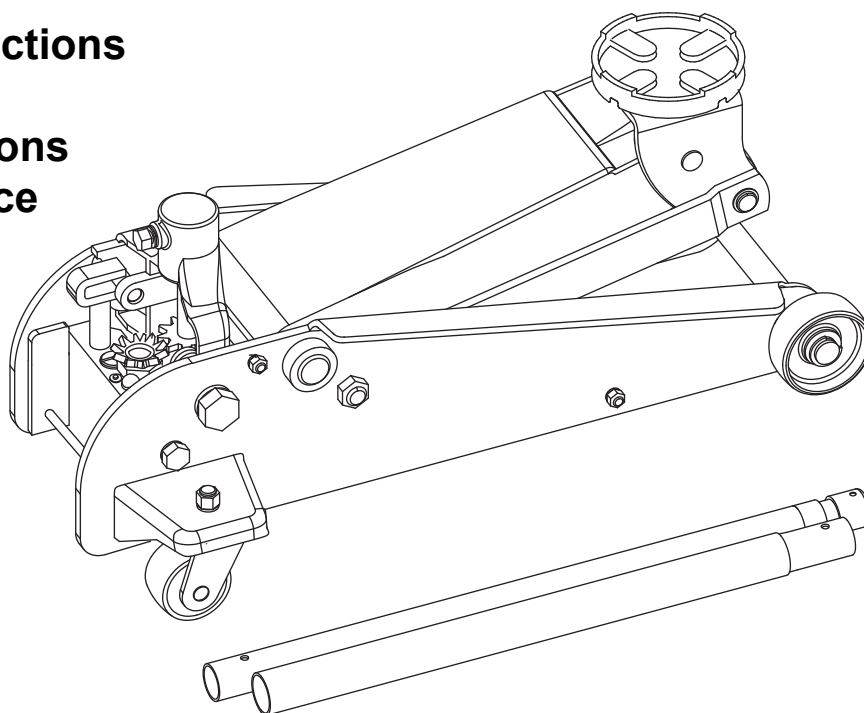


WORKING LOAD LIMIT 2000KG GARAGE JACK

Model No: G2000-B

**THIS NEW JACK CONFORMS TO MANDATORY
AS/NZS 2615:2004 STANDARD**

**Safe Instructions
Operation
Specifications
Maintenance**



WARNING: THE JACK MUST BE USED ONLY ON HARD LEVEL SURFACES AND BE FREE TO ROLL DURING LIFTING AND LOWERING. DO NOT GET UNDER A VEHICLE THAT IS SUPPORTED BY A TROLLEY JACK - USE SUPPORT STANDS.

CAUTION:

Carefully Read Instructions and Procedures for Safe Operations

SAFE INSTRUCTIONS

INSTRUCTIONS

This hydraulic trolley jack is designed to be used with a 100mm diameter head cap, and a handle length of 1070mm length.

1. **Before Each Use**

Visual inspection should be made before each use of the garage service jack for abnormal conditions such as cracked welds, leaks and damaged, loose, or missing parts.

2. **After Each Use**

Garage jack should be inspected immediately if the lift is believed to have been subjected to an abnormal load or shock. It is recommended that inspection be made by manufacturer's or supplier's authorized repair facility.

3. **Annual Inspection**

Annual inspection of the garage jack is recommended and shall be made by the manufacturer's or supplier's nominated repair facility to ensure that your garage jack is in optimum condition.

RECOMMENDATION FOR SAFE USAGE OF THE JACK

1. The hydraulic trolley jack should be used on a hard level surface and be free to roll during lifting and lowering.
2. The unlifted wheels of the vehicle should be chocked.
3. The load should be centrally located on the head cap.
4. No person should remain in a vehicle that is being lifted.
5. The hydraulic trolley jack should be used for lifting and lowering only; the raised vehicle should be supported on vehicle support stands.
6. No person should get bodily under a vehicle that is supported by a hydraulic trolley jack.
7. The vehicle manufacturer owner's manual should be consulted prior to the lifting of the vehicle.
8. Make sure that lift point is stable and properly centered on jack saddle.
9. Vehicle should be clear of all passengers. Transmission should be in gear (or park for automation transmission) and the emergency brake should be engaged.
10. Familiarize yourself thoroughly with this owner manual before operation to prevent damage to jack and property, or personal injury.



CAUTION BEFORE USING



Due to shipment and/or handling air can be trapped in the hydraulic system, which can interfere with the jacks lifting. To release air from the hydraulic system:

- Open release valve by turning the jack handle counterclockwise.
- Remove the oil filler plug from the cylinder.
- Rapidly pump jack handle through several full strokes.
- Replace the oil filler plug into the cylinder.



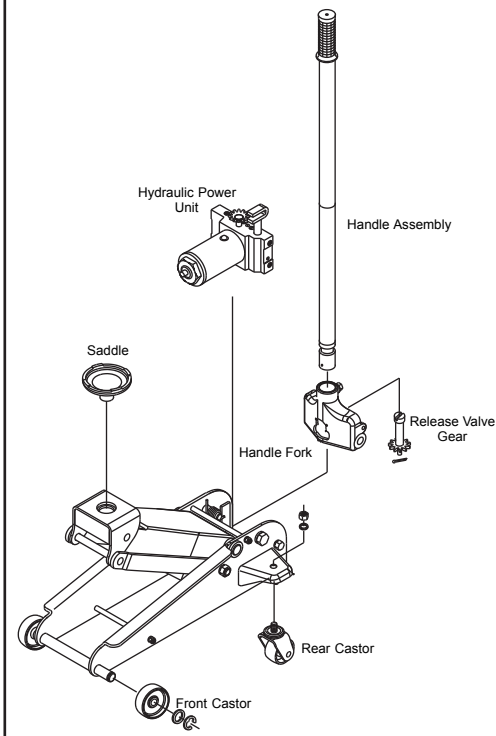
WARNING:



- USE ONLY ON HARD LEVEL SURFACES
- DO NOT GET UNDER A VEHICLE THAT IS ONLY SUPPORT BY A TROLLEY JACK
- USE SUPPORT STANDS

OPERATION

Know Your Jack



TO RAISE

Place vehicle in park, apply brake and chock wheels with suitable devices.

1. Position the jack under the load and close release valve by turning clockwise firmly.
2. Operate manually by pumping with handle until saddle ALMOST contacts with vehicle. Check to see that the saddle is centered and will contact the load lifting point firmly.
3. Continue to pump jack handle until load is raised to desired height and immediately transfer load to appropriately rated jack stands.

TO LOWER:

1. Raise load sufficiently to remove support devices, then slowly turn handle counterclockwise until load begins to lower. Carefully control the rate of descent and avoid shock load created by opening and closing valve quickly. This may result in overloading hydraulic circuit causing damage to jack and personal injury.
2. Remove jack from under load and if necessary, push saddle down fully to reduce piston and ram exposure to contamination.

SPECIFICATION

Model No. : G2000-B

Working Load Limit: 2,000kg

Height Lowered: 135mm

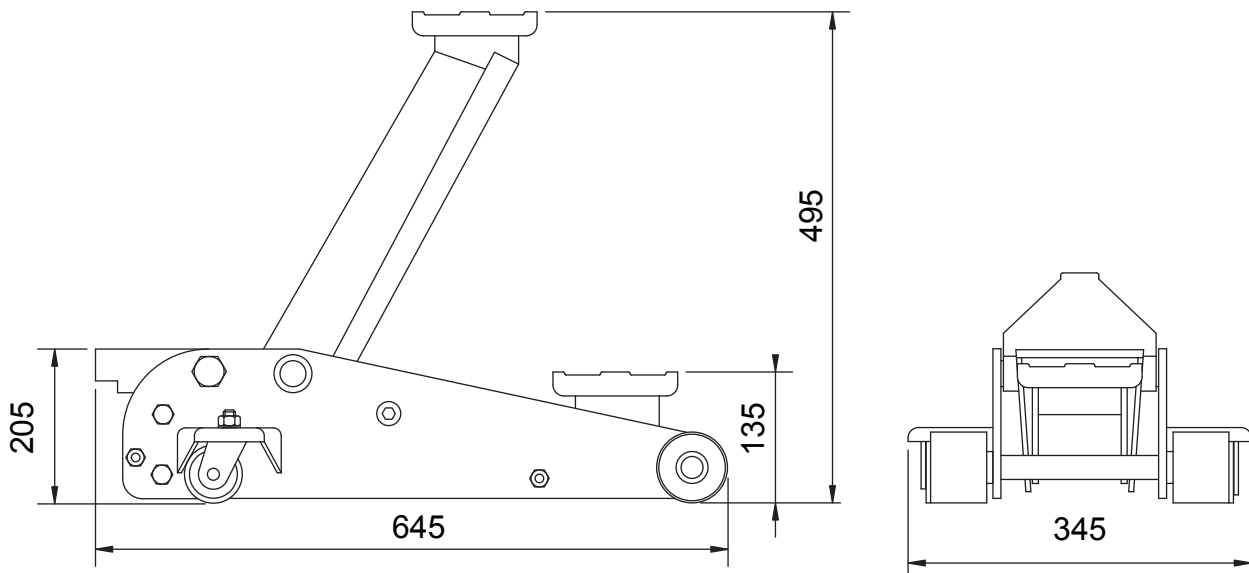
Height Raised: 495mm

Jack Dimension: 645mm x 345mm x 205mm

Handle Length: 1,240mm

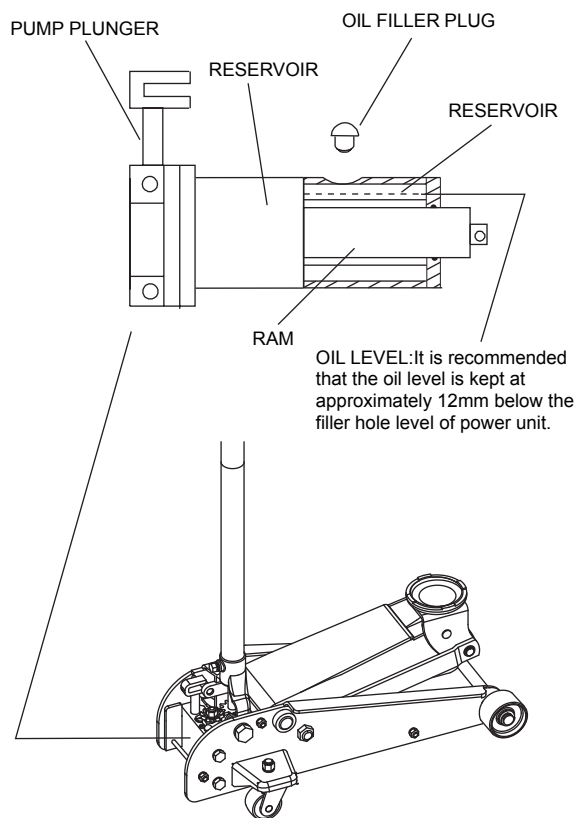
Volume of Oil: 150cc

Net Weight: 31.5kg



MAINTENANCE

Know Your Jack



MAINTAINING OIL LEVEL

Important : When adding or replacing oil, ALWAYS use good grade Hydraulic Jack oil. DO NOT use Hydraulic Brake Fluid, Alcohol, Glycerin, Detergent, Motor Oil or dirty oil. Use of an improper fluid can cause serious internal damage to your jack.

ADDING OIL

- Position the jack on level ground and fully lower the saddle. Remove oil filler plug.
- Turn jack over and drain old oil out through the oil filler plug hole.
- Refill with new oil through the oil filler plug hole. Not allow dirt or other foreign materials to enter the hydraulic system when filling.
- After refilling, remove any air from hydraulic system by opening the release valve and rapidly pumping the jack handle several times.
- Put the oil filler plug back and the jack is ready for use.

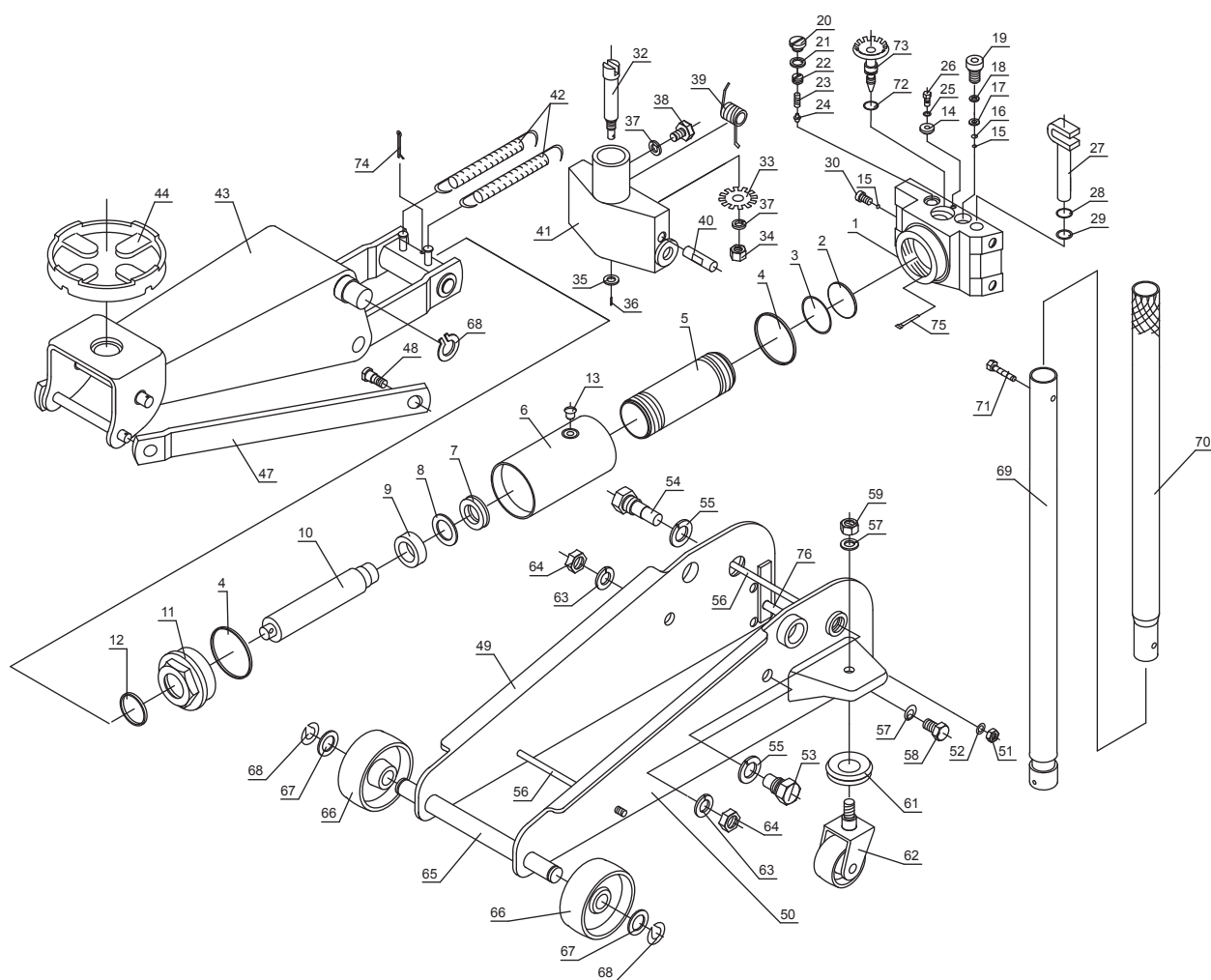
LUBRICATION

- Add lubricating oil to all moving part as needed.

PREVENTING RUST

- Check ram and pump plunger every few months for any signs of rust or corrosion. Clean as needed by wiping with oily cloth.
- When not in use, ALWAYS store jack with saddle and pump plunger lowered all the way down.

POSSIBLE PROBLEMS						POSSIBLE CAUSES AND SOLUTIONS (Refer to Operation and Maintenance procedures for detail information)
Jack will not lift load	Jack will lift load, but will not hold	Jack will not lower completely	Poor jack lifting. Pump feels spongy	Jack will not lift to full height	Handle raises by itself when jack is under load	
X						Release valve not tightly closed. To close or tighten, turn release valve clockwise.
X			X	X	X	Air is in hydraulic system. Release air from system.
X	X		X	X		Oil level is low in jack. Add oil as required.
		X				1. Oil reservoir is over filled. Drain out some oil. 2. Lubrication of moving parts is necessary.
X	X		X			Power unit is malfunctioning. Replace the power unit.



SPARE PARTS LIST

PRODUCT NO.:
G2000-B

ITEM	PARTCODE	DESCRIPTION	QTY	ITEM	PARTCODE	DESCRIPTION	QTY
1	G489-30020-0001	BASE	1	34	1317-00010-031	NUT	1
2	G489-30024-0000	O-RING	1	35	1401-00008-031	WASHER	1
3	G489-30023-0000	BACK-UP WASHER	1	36	1529-20010-031	RETAINER	1
4	G489-30006-0000	O-RING	2	37	1413-00010-204	LOCK WASHER	5
5	G489-30022-0000	CYLINDER	1	38	1103-10016-031	SCREW	1
6	G489-30025-0000	RESERVOIR	1	39	G489-20008-0410	RETURNING SPRING	1
7	G489-30004-0003	U-CUP-RAM	1	40	G489-40001-0410	PIN	1
8	G489-30003-0000	BACK-UP WASHER	1	41	G589-40001-1000	HANDLE FORK	1
9	F348-30007-0000	BUCHING COVER	1	42	G489-10002-0421	RETURN SPRING	2
10	G489-30001-0000	RAM PLUNGER	1	43	G489-12000-1000	LIFT ARM ASSY	1
11	G489-30005-0000	TOP NUT	1	44	G95L-12000-0000	SADDLE	1
12	F348-30002-0000	O-RING	1	47	G489-10001-1000	RADIUS LINK	2
13	F361-30030-0000	OIL FILTER	1	48	G489-20004-0410	STUD RADIUS LINK	2
14	G489-30014-0000	WASHER	1	49	G489-22000-1000	RIGHT SIDE PLATE	1
15	1623-06350-243	BALL	1	50	G489-21000-1000	LEFT SIDE PLATE	1
16	1623-09530-243	BALL	1	51	1303-00008-031	NUT	2
18	G489-30012-0000	GASKET	1	52	1413-00008-204	LOCK WASHER	2
19	G489-30013-0000	SCREW	1	53	G489-20007-0410	LEFT HANDLE BOLT	1
20	G489-30011-0000	GUARD SCREW	1	54	G489-20005-0410	RIGHT HANDLE BOLT	1
21	G489-30010-0000	OIL SEAL	1	55	1413-00020-204	LOCK WASHER	2
22	G489-30009-0000	SCREW SAFETY VALVE	1	56	G493-20001-0410	FRAME TIE ROD	1
23	G489-30008-0000	SAFE SPRING	1	57	1413-00012-204	LOCK WASHER	4
24	G489-30029-0000	COVERING	1	58	G489-20006-0410	SCREW	2
25	1413-00006-243	LOCK WASHER	1	59	1317-00012-031	NUT	2
26	1103-06012-204	SCREW	1	61	G489-23000-0000	BEARING ASSY.	2
27	G489-31000-0380	PUMP PISTON	1	62	G489-24000-0000	REAR CASTER ASSY	2
28	G489-30021-0000	BACK-UP WASHER	1	63	1413-00010-204	LOCK WASHER	4
29	G489-30027-0000	O-RING	1	64	1302-00010-031	NUT	4
30	G589-30015-0421	SCREW	1	65	G070-20002-0410	FRONT AXLE	1
32	G489-40004-0411	RELEASE VALVE CONNECTING BAR	1	66	G489-20001-1000	FRONT WHEEL	2
33	G489-40003-1000	RELEASE VALVE GEAR	1				

FACTORY NO.:
G2000-B

SPARE PARTS LIST

PRODUCT NO.:
G2000-B

ITEM	PARTCODE	DESCRIPTION	QTY
67	1401-00018-031	WASHER	2
68	1438-00015-204	SNAP RING-E	2
69	G489-41000-1002	HANDLE ASSY.	1
70	G489-40002-1001	HANDLE II	1
71	1103-06034-031	SCREW	1
72	G489-30015-0000	O-RING	1
73	G489-32000-0000	RELEASE VALVE ASSY	1
74	1529-40035-031	RETAINER	1
75	F361-30007-0000	FILTER	1
76	G489-20003-0410	FRAME TIE ROD	1

FACTORY NO.:
G2000-B